



Adult Courses 2024

Malahide, Dublin

www.iceireland.com

Malahide, Dublin.



Welcome to ICE

Established in 1992, the Irish College of English is an award-winning English language school in Malahide, Dublin. Located on Dublin's coastline, Malahide is one of Ireland's most beautiful towns and a perfect location to learn English.

The Irish College of English is recognised by ACELS, a service of Quality and Qualification Ireland, for English Language Teaching (ELT). We are members of MEI, a body promoting Quality Education in Ireland and providing Learner Protection. We have also been recognised by Study Travel Magazine with 6 nominations in the Study Travel Star Awards.

Our highly experienced teachers are native English speakers with a minimum bachelor's degree and ELT qualification. We provide the highest quality English language courses to students from across the world and our high standards have been recognised by our awards and excellent reviews.

Why students choose ICE

- Experience - Over 30 years of teaching English
- Recognition – Award-winning language School
- Quality Tuition – Highly qualified teachers
- Location – Beautiful seaside town, perfect location for learning English
- Reputation – We are delighted to be voted '**Best Language School in Ireland 2019**' by students based on Google and Facebook ratings.



Recognised by ACELS, a service of Quality and Qualifications Ireland, for English Language Education.



Malahide



Dublin
City Centre

Dublin

CONTENTS

| | |
|---------------------------------------|-----------|
| • Our School | 4 |
| • Quality Tuition | 5 |
| • General English Courses | 6 |
| • Combination & One-to-One | 8 |
| • Academic Year Programme | 10 |
| • Business English | 12 |
| • Social Programme | 14 |
| • Homestay | 16 |
| • How to Book | 18 |

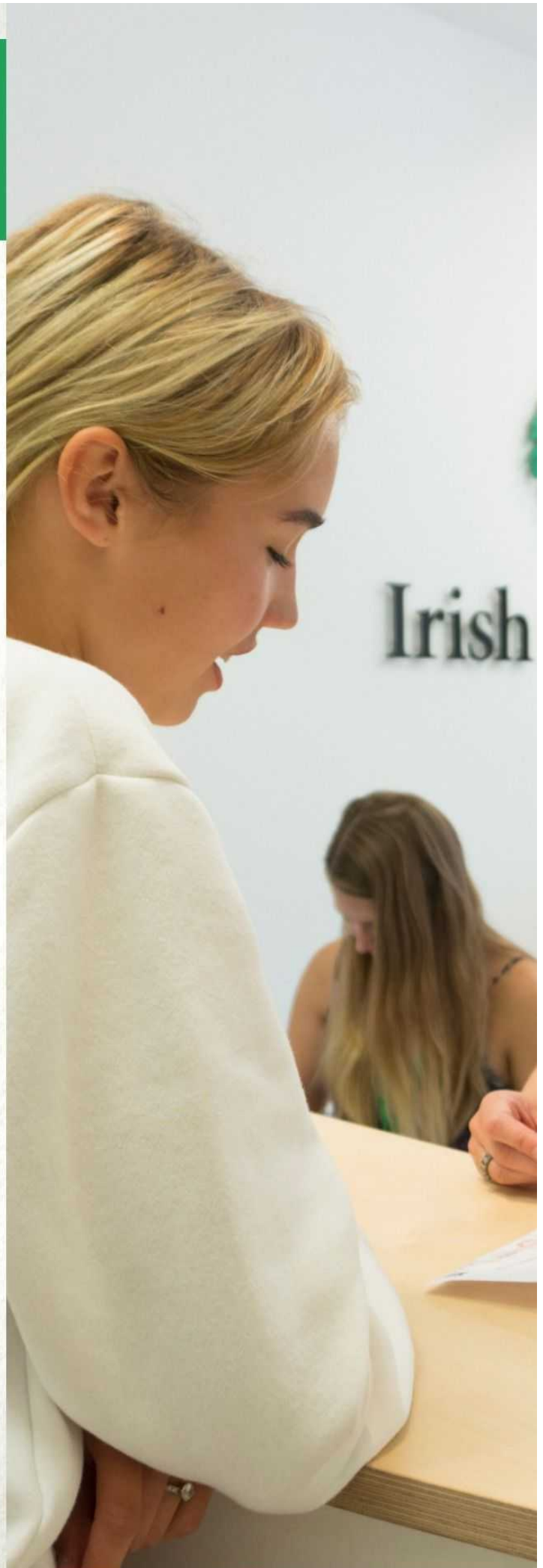
OUR SCHOOL

Established in 1992, we are a professional school with a dedicated team of highly experienced teachers and administrative staff.

The school is located in the heart of Malahide village with excellent rail and bus links to Dublin city centre (20 minutes by train) and Dublin Airport (10 minutes by taxi). Our location offers students a great way to experience Dublin, enjoying the city's highlights while living in a beautiful and safe seaside village.

The school is newly refurbished and all our classrooms are equipped with the latest technology for English language tuition.

Located on Dublin's coastline, Malahide is one of Ireland's most beautiful towns and a perfect location to learn English. Malahide's many attractions include Malahide Castle and Gardens, Malahide Beach and beautiful coastal walks, Malahide Marina and Malahide Village. The village boasts a huge selection of pubs, restaurants and cafes.



QUALITY TUITION

- Highly Experienced Teachers - Minimum Bachelor's Degree and Recognised ELT Qualification
- Focus on Progression
- Personal Attention
- Small Class Sizes
- Latest Classroom Technology
- Free Conversation Classes

ICE Progression Plan

Step 1

Level: CEFR A2 Pre-Intermediate
Weeks: 12 - 14
Exams: KET

Step 2

Level: CEFR B1 Intermediate
Weeks: 12 - 14
Exams: CAE / IELTS 4.5 - 5.0

Step 3

Level: CEFR B2 Upper-Intermediate
Weeks: 12 - 14
Exams: CAE / IELTS 5.5 - 6.0

Step 4

Level: CEFR C1 Pre-Advanced - Advanced
Weeks: 12 - 14
Exams: CAE / IELTS 6.5 - 7.0

GENERAL ENGLISH COURSES

The General English Courses focus on communication and improving fluency. The courses cover the key elements of language development:

- Speaking
- Listening
- Reading
- Writing

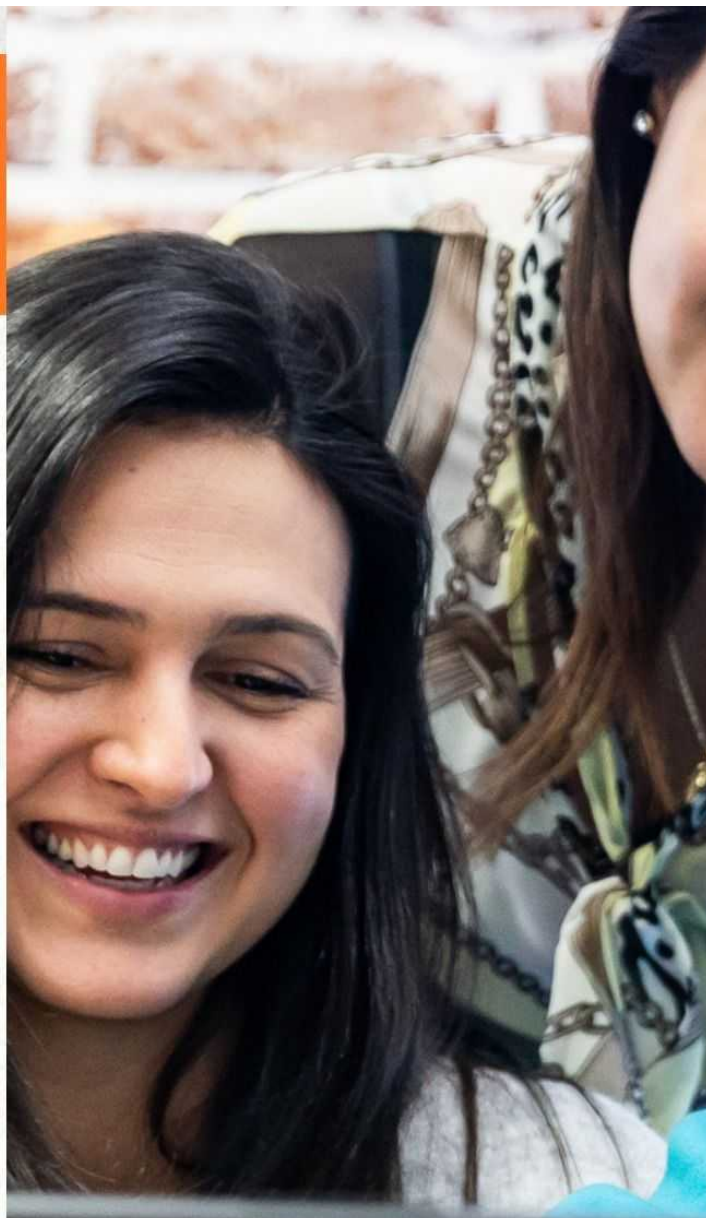
The aim of the course is progression and our highly experienced and qualified team of teachers will help you reach your English language goals.

Timetable

| | |
|--|------------------------------------|
| | |
| General English 15 Hours per week | Monday to Friday: 9.15am - 12.30pm |
| General English 20 Hours per week | Monday to Friday: 9.15am - 1.45pm |

| | |
|--------------------------|---------------------------------------|
| Tuition | 15 - 20 hours per week |
| Class Size | Max 15 students, average 10 |
| Course Duration | 1 to 25 weeks |
| Course Start Date | Any Monday |
| Levels | Pre-Intermediate (A2) - Advanced (C1) |
| Certificate | Certificate of Attainment |

- Highly Experienced Teachers - Minimum Bachelor's Degree and Recognised ELT Qualification
- Focus on Progression
- Personal Attention
- Small Class Sizes
- Latest Classroom Technology
- Free Conversation Classes



A young man and woman are looking at a laptop screen. The man is in the foreground, wearing a blue hoodie and a patterned scarf, looking intently at the screen. The woman is behind him, smiling and looking at the same screen. The background is blurred, suggesting an indoor setting.

Course General English 15

Full-time 15 hours General English

| | |
|---------------------|---------|
| 1 Week | € 250 |
| 2 Weeks | € 470 |
| 3 Weeks | € 650 |
| 4 Weeks | € 795 |
| 5 - 12 Per Week | € 185 |
| 13 - 24 Per Week | € 165 |
| Academic Year | € 3,500 |

A Registration Fee of € 60 applies to all Adult Courses and includes Text Book.

Course General English 20

Full-time 20 hours General English

| | |
|---------------------|---------|
| 1 Week | € 315 |
| 2 Weeks | € 625 |
| 3 Weeks | € 865 |
| 4 Weeks | € 1050 |
| 5 - 12 Per Week | € 230 |
| 13 - 24 Per Week | € 195 |
| Academic Year | € 4,500 |

A Registration Fee of € 60 applies to all Adult Courses and includes Text Book.

Accommodation

€250 per week, including:

- Single Room
- Breakfast
- Packed Lunch
- Dinner

Administration Fee of € 75 applies for host family accommodation.

COMBINATION ENGLISH

The Combination English Courses combine 15 hours of General English tuition with 5 or 10 hours of private One-to-One classes per week. The One-to-One classes allow students to focus on specific areas they have identified for improvement or specialist areas of English.

One-to-One classes

For students who want to focus on specific language development and see rapid results, we highly recommend a programme of one-to-one lessons. Our motivated teachers work intensively with students to ensure maximum progress.

Timetable

| | |
|--|------------------------------------|
| | |
| General English 15 hours per week | Monday to Friday: 9.15am - 12.30pm |
| One-to-One Lessons | Monday to Friday: 1pm |

| | |
|--------------------------|---|
| Tuition | 15 hours General English plus 5 or 10 hours One-to-One per week |
| Class Size | Average 10, max 15 students |
| Course Duration | 1 to 4 weeks |
| Course Start Date | Any Monday |
| Levels | Pre-Intermediate (A2) - Advanced (C1) |
| Certificate | Certificate of Attainment |



- Highly Experienced Teachers - Minimum Bachelor's Degree and Recognised ELT Qualification
- Focus on Progression
- Personal Attention
- Small Class Sizes
- Latest Classroom Technology
- Free Conversation Classes



Course Combination English 20

Full-time 20 hours General English
+ 5 hours One-to-One Lessons

| | |
|---------|---------|
| 1 Week | € 500 |
| 2 Weeks | € 975 |
| 3 Weeks | € 1,410 |
| 4 Weeks | € 1,785 |

A Registration Fee of € 60 applies to all Adult Courses and includes Text Book.

Course Combination English 25

Full-time 15 hours General English
+ 10 hours One-to-One Lessons

| | |
|---------|---------|
| 1 Week | € 810 |
| 2 Weeks | € 1,585 |
| 3 Weeks | € 2,300 |
| 4 Weeks | € 2,950 |

A Registration Fee of € 60 applies to all Adult Courses and includes Text Book.

Accommodation

€250 per week, including:

- Single Room
- Breakfast
- Packed Lunch
- Dinner

Administration Fee of € 75 applies for host family accommodation.

ACADEMIC YEAR PROGRAMME

The Academic Year Programme is a 33 week course (25 course weeks) for non-EEA students. Students sit a recognised exam at the end of the course (IELTS).

Levels

| Entrance Level | Expected Exit Level | Exam |
|-------------------------|-------------------------|-------|
| Pre-Intermediate (A2) | Intermediate (B1) | IELTS |
| Intermediate (B1) | Upper-Intermediate (A2) | IELTS |
| Upper-Intermediate (A2) | Advanced (C1) | IELTS |
| Advanced (C1) | Advanced (C1) | IELTS |

Course includes:

- 25 Weeks Tuition
- Registration
- Course Book
- Medical Insurance
- Learner Protection
- IELTS Exam

Exams

Students will sit either the IELTS exam at the end of the course.

Timetable

| | |
|--|------------------------------------|
| | |
| General English 15 hours per week | Monday - Friday: 9.15am to 12.30pm |





Work & Holidays

Academic Year students must complete 25 course weeks in an 8 month period. The remaining 10 weeks are a vacation period.

There is a compulsory 3 week vacation for the Christmas holiday, the remainder of the holiday will be taken on completion of the 25 course weeks. Any holidays a student wishes to take outside these periods must be booked during the first course week.

Academic Year students have the right to work 20 hours per week during the course and 40 hours per week during holidays taken from June to September & December 15th to January 15th.

Academic Year Programme: General English + IELTS

Full-time 15 hours General English
Monday to Friday

€ 3,500

A Registration Fee of € 60 applies to all Adult Courses and includes Text Book.

Accommodation

€250 per week, including:

- Single Room
- Breakfast
- Packed Lunch
- Dinner

Administration Fee of € 75 applies for host family accommodation.

BUSINESS ENGLISH

We offer Business English Courses to companies in all sectors to improve the English language proficiency of non-native staff.

We work with many of Ireland's leading companies and offer specialised English language courses to meet individual company requirements. We have been working in the corporate sector for over 15 years and have an excellent reputation. Some of our previous clients include Guidewire, Accenture and KPMG.

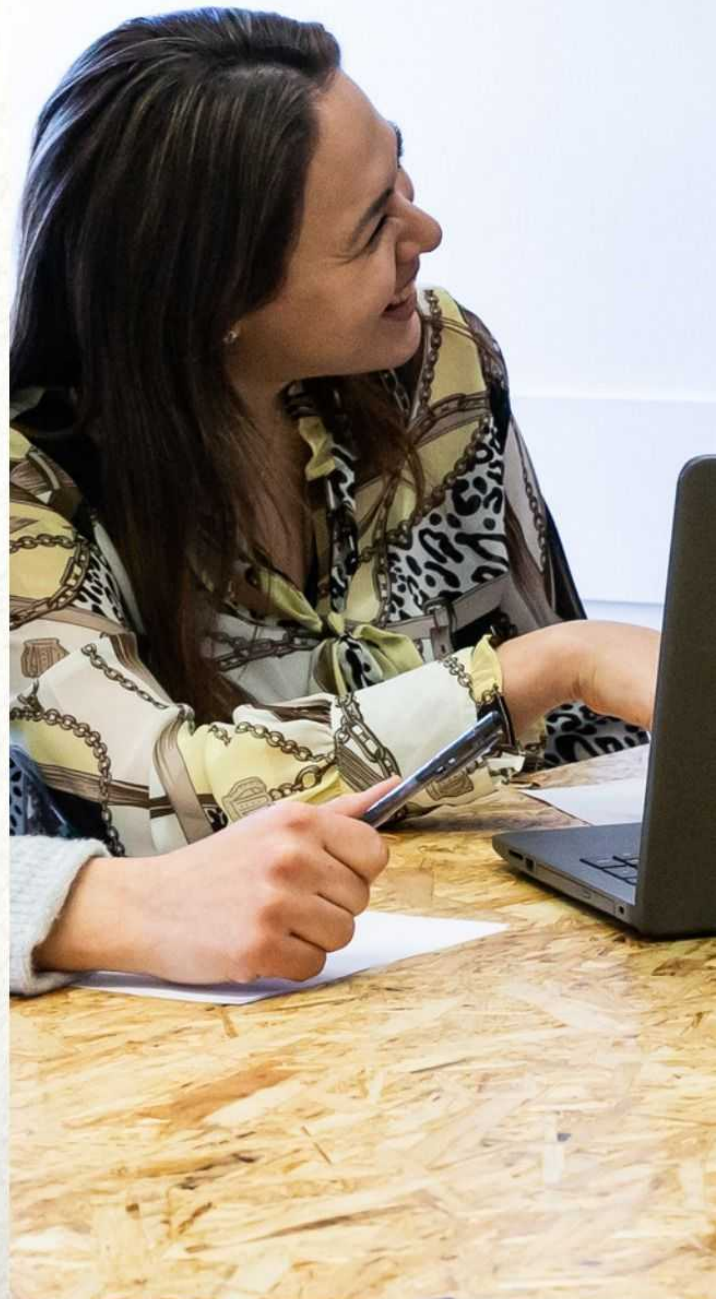
We offer companies the choice of sending employees to one of our centres or to opt for in-house classes that can cater for groups of 1 – 15 students per session.

The aim of our courses is to increase participants' English proficiency and communication skills with specific concentration on Business English / Customer Service English / sector-specific English, which they can put directly into use in the corporate work environment.

Competency Exams: We also prepare non-native English staff for International Competency Exams such as the Cambridge Exams including the Business English Cambridge Exam – BEC Vantage and BEC Higher.

As a guide we initially provide a sample syllabus for General English, Customer Service English or Business English Courses. Using needs analysis and level testing, we design courses to meet your specific needs.

- Highly Experienced Teachers - Minimum Bachelor's Degree and recognised ELT Qualification
- Focus on Progression
- Personal Attention
- Small Class Sizes
- Latest Classroom Technology



SOCIAL PROGRAMME

Discover Dublin & Ireland!

City Tours | Excursions | Activities

We have an optional social programme for all our adult students every week. Students can choose to take part in excursions and full-day trips as well as free conversation classes and social activities. Some activities are free and some have entrance and transport fees.

| ADULT SOCIAL PROGRAMME | | | | | | |
|--|--|--|-------------------------------|---|---|--|
| Monday 19th August - Saturday 24th August 2019 | | | | | | |
| TIME | MON | TUE | WED | THU | FRI | SAT |
| 12:30-12:45 | BREAK | | | | | |
| 12:45-16:30 | Dublinia meeting at Reception at 12.45 <i>Free</i> | Howth meeting at Reception at 12.45 <i>Free</i> | Day off <i>Free</i> | National Art Gallery meeting at Reception at 12.45 <i>Free</i> | Pitch and Putt meeting at Reception at 12.45 <i>Free</i> | Food tour Depart at 10.45 from Dublin City Centre <i>Free</i> |
| Evening free time | Gibney's Pub Meet your friends for a Pub meet-up <i>Free</i> | | | | | |



Homestay

Spending time with native speakers is the most important part of learning a language and staying with an Irish family is the best opportunity to do so.

- **Experience Irish Hospitality**
- **Breakfast, Packed Lunch & Dinner**
- **Walking Distance or Short Bus Journey**
- **One Nationality per Home**





ICE

Thank You for choosing ICE



Irish College of English
6 Church Road,
Malahide
Co. Dublin,
K36 KF21,
Ireland.

www.iceireland.com

info@iceireland.com
+353 (0)1 845 3744

28 Years
of Expertise
1992 - 2020